

Supporting the implementation of the Smart Readiness Indicator

Project pitches and panel session



SRI2MARKET



SMIRT²

easySRI: Improving & demonstrating the potential of SRI

(LIFE21-CET-SMARTREADY-easySRI)



Project Pitch

Dr. Paraskevas Koukaras, CERTH

23/03/2023



This project has received funding from the European Climate, Infrastructure & Environment Executive Agency (CINEA) under grant agreement no 101077169.

Project Identity Card

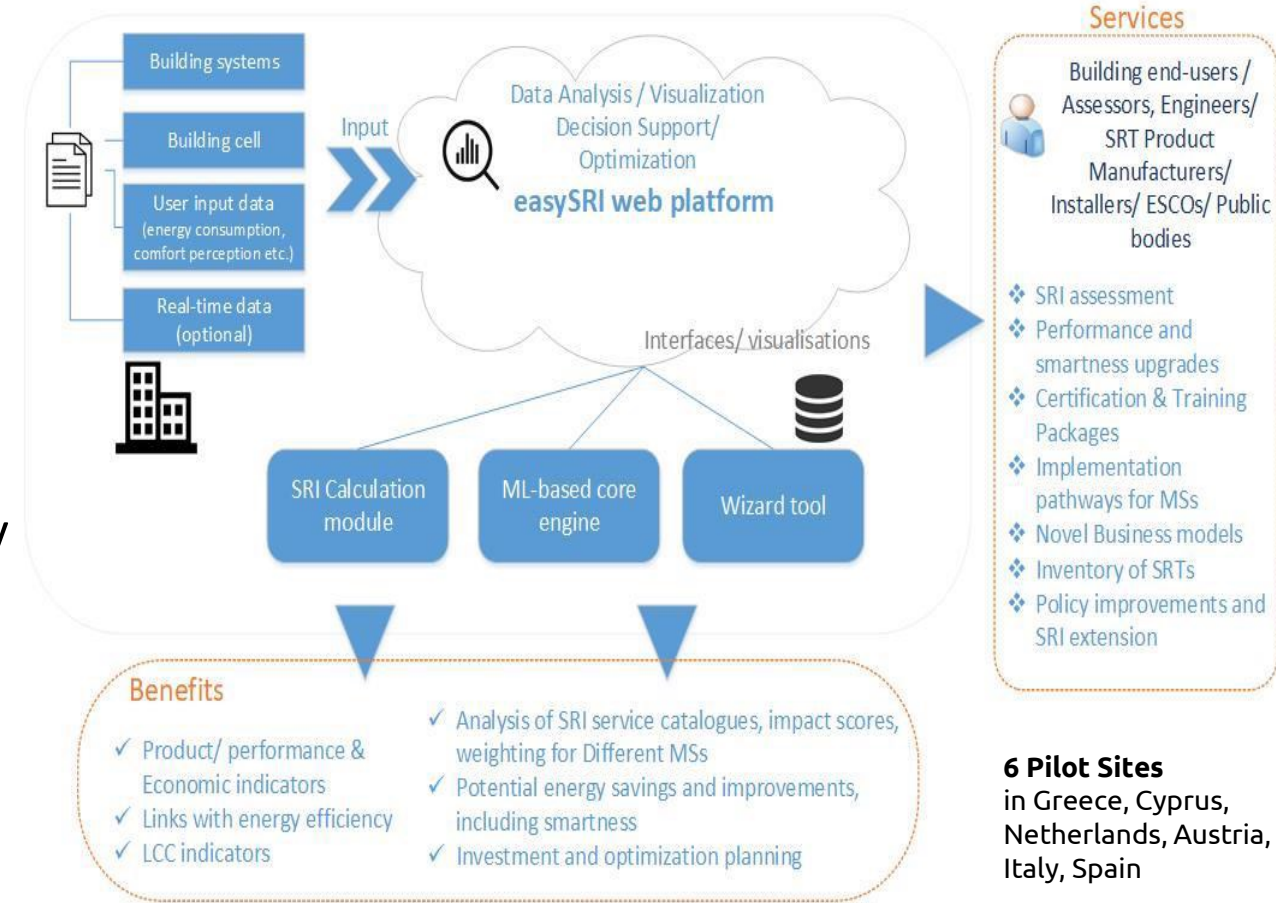
Grant Number	101077169
Project name	Improving & demonstrating the potential of SRI
Project acronym	LIFE21-CET-SMARTREADY-easySRI
Call/ Topic	LIFE-2021-CET/ LIFE-2021-CET-SMARTREADY
Type of action	LIFE Project Grants
Granting authority	European Climate, Infrastructure & Environment Executive Agency
Duration	36 months
Starting date	1 November 2022
End date	31 October 2025
Total eligible costs (BEN & AE)	€ 2,104,562.67
EU contribution	€ 1,999,334.53
Partners	CERTH (EL), FREDU (CY), E@W (IT), SGS (ES), SERA (AT), CETMA (IT), WSEE (IE), DEMO (NL), ASI (AT), CRES (EL)

easySRI Vision-Objectives

- ❖ Main Aim: enable an **extendable web platform** and act as a basis for effective implementation of SRI → allow further testing @ EU MS level
- ❖ Introduce additional parameters like **energy efficiency & financial aspects** → information more **understandable** and **quantitative** for the user of the building
- ❖ Implementation of **ML services** → assessment of building system's performance/ smartness → upgrade recommendations
- ❖ Promotion of **novel business strategies** → adoption & stakeholder engagement for utilizing SRI
- ❖ Contribute to possible update of **current standards & integration w/ other standards** → elevate SRI usability in **EU policy**

easySRI Outcomes/Results

- ❖ easySRI offers a **single platform** that combines:
 - A **SRI Calculation engine**,
 - A **SRI Wizard tool** &
 - A **ML-based core engine** identifying best SRI renovation solutions & making recommendations for upgrades.
- ❖ **Enable services** aimed to:
 - Promote & exploit the rollout of ICT & Smart Ready Technologies (SRTs)
 - Promote & disseminate the SRI adoption as a **standard index for evaluating** efficient building operation
 - Generate **new** “Green & Sustainable” **businesses**
 - Reduce (as indirect & inducted effect), **energy consumption** in buildings.



easySRI Expected Impact

- ❖ easySRI → Interlink between two different client segments:
 - **Group 1:** Stakeholders aiming to renovate their **buildings** & increase their **SRI score**
 - **Group 2:** Stakeholders who can offer **products & services** for it.
- ❖ Prototype will be exploited and extended with a **concrete market uptake**, generating a platform to act as a **“SRI-raising” products & services solution**.
- ❖ **Speed up** the SRI advancements foreseen by national provisions in Europe.
- ❖ easySRI results are expected to show significant **impact** in terms of **implementation & market uptake** of the Smart Readiness Indicator.

Good practices → improvements for EU & national policies & initiatives

- ❖ easySRI will **record & suggest** ways for integrating main outcomes to **existing policies** → Facilitate the SRI implementation according to national legislations & analysing **compatibility issues**.
- ❖ easySRI will **document the status** of European initiatives → next generation **EPCs, B-LOGs, Renovation passports, the European Green Deal, Renovation Wave Strategy** & will identify all SRI related aspects.
- ❖ Focus on partner countries **to reach out to** public authorities identifying national level priorities **for adopting SRI**.
- ❖ **Communication** should be established with the SRI Technical support team & the SRI Platform working groups.

SRI2MARKET

Project Pitch at the SmartBuild4EU final event

Filippos Anagnostopoulos
Project Coordinator
IEECP

March 2023



Co-funded by the European Union under Grant Agreement no. 101077280. Views and opinions expressed are however those of the author(s) only and do not necessarily reflect those of the European Union or CINEA. Neither the European Union nor the granting authority can be held responsible for them.

Paving the way for the adoption of the SRI into national regulation and market

SRI2MARKET

SRI2MARKET supports Member States to apply the EU's Smart Readiness Indicator (SRI) to plan upgrades of their building stock, helping overcome regulatory and market barriers.

SRI2MARKET will use lessons learned by early adopter countries that are well advanced in rolling out SRI to support and inspire action among additional Member States.

Geographical coverage

Countries with ongoing test phases

AUSTRIA AND FRANCE

SRI2MARKET will learn from their tests and provide complementary support to their activities.

Countries with active interest in SRI

PORTUGAL AND SPAIN

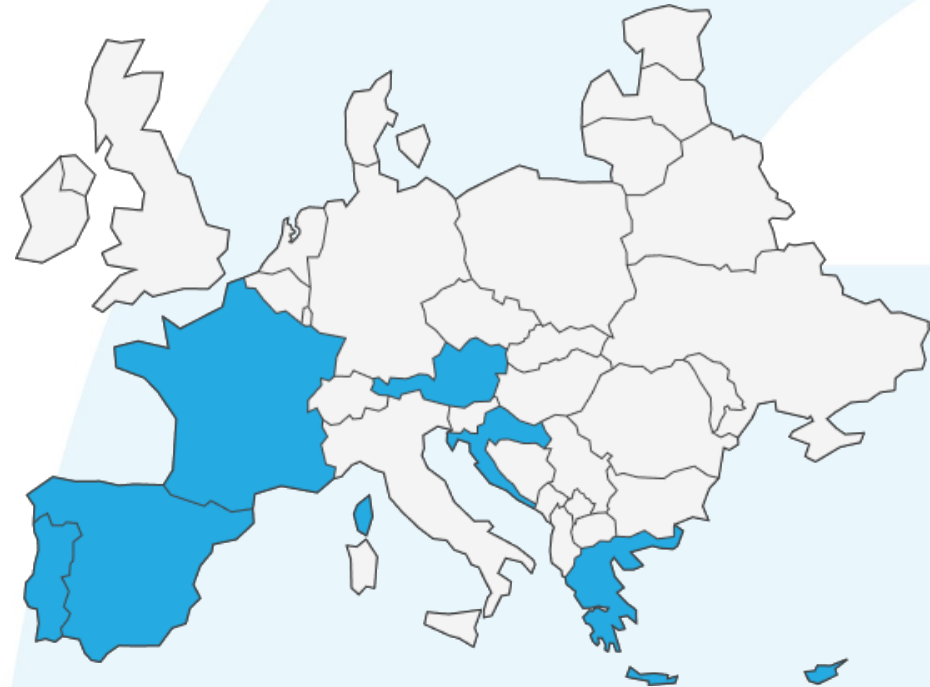
SRI2MARKET will support with designing and implementing a testing phase, applying the lessons learnt from the first group.

SRI2MARKET

Countries examining how to proceed

CROATIA AND CYPRUS

SRI2MARKET will engage national policy and market stakeholders to create interest in the SRI and the opportunities that emerge from it.



Project objectives



Support the targeted countries on introducing the SRI into their national regulation



Propose public funding schemes to finance SRI upgrades in buildings



Develop tools to guide SRI assessors and streamline building assessments



Provide training to EPC assessors on the SRI and the methodology of its calculation



Set up SRI pilots at national level so as to identify best practices for SRI assessments



Provide recommendations to building owners and facility managers on cost-effective SRI upgrades

Methodology

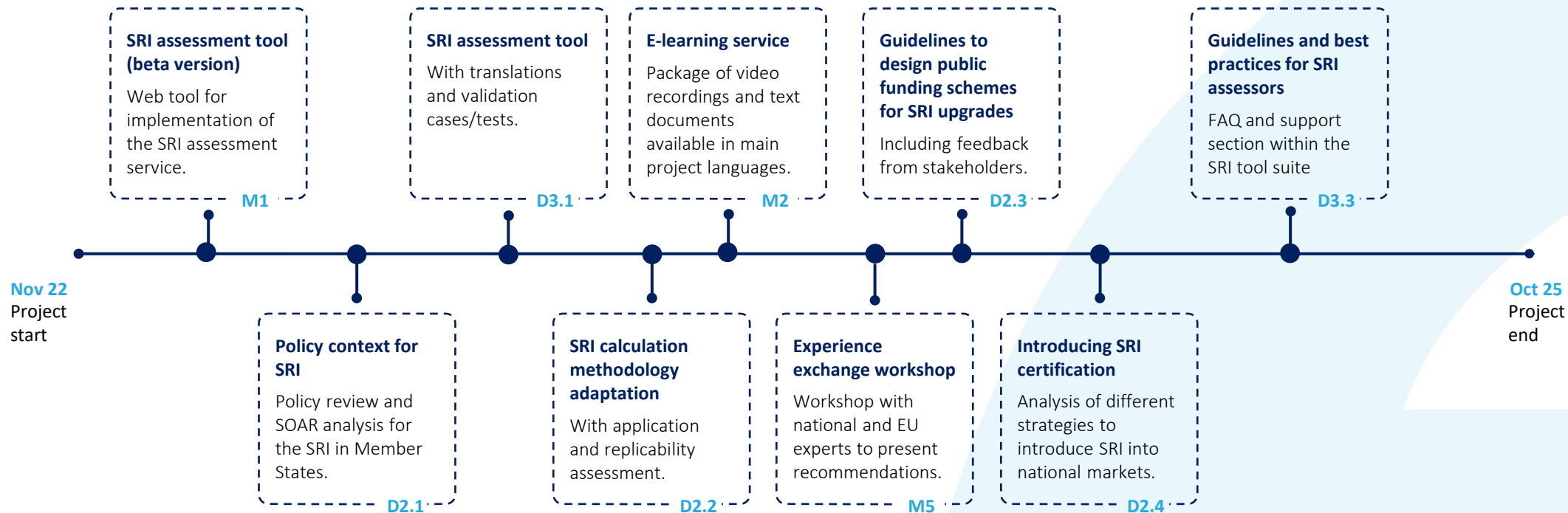


Integration of the SRI with national regulation focuses on supporting public authorities in introducing the SRI into their regulation and market.

Creation of demand for the SRI at national level focuses on informing stakeholders on how to benefit from the SRI and to cost-effectively upgrade the SRI of a building. This includes the development of an e-learning service.

Stakeholder engagement proposes to the relevant public authorities national roadmaps for rolling out the SRI.

Key results



Highlighted outcomes

SRI assessment tool

The tool will provide a user-friendly interface for users to save their SRI assessments. The underlying calculation engine will adapt the assessment to national specificities and priorities.

The tool will also create dynamic scorecards according to pre-defined filters, and it will automatically compare SRI assessments of buildings situated in different countries.

E-learning platform

E-learning lessons on the SRI and its assessment methodology. The course will be structured in chapters and will rely on training materials such as videos and documents in every partner's national language.

The program will be mainly practical and based on examples / case studies. Participants will take a test at the end and receive an informal certification.

Project outputs and KPI



SRI assessment tool

3,000 users



SRI assessments

1,200 total



Training on SRI methodology

1,200 beginners, 600 experts



Use cases of cost-effective SRI upgrades

30 total



Workshop for co-designing and evaluating business models

20 representatives of ESCO and building EMS providers

SRI2MARKET

Consortium



Agência para a Energia



SRI2MARKET



SRI-ENACT

Co-creating Tools and Services
for Smart Readiness Indicator Uptake

Project Overview

Laura Junasová (SRI-ENACT Dissemination & Communication leader, Euroheat & Power)



The LIFE21-CET-SMARTREADY-SRI-ENACT project has received funding from the European Union's LIFE Programme under grant agreement N°101077201

Project Identity

- **Project Title:** Co-creating Tools and Services for Smart Readiness Indicator Uptake
- **Project Start:** 1st December 2022
- **Duration:** 30 months
- **Consortium:** 10 partners and 1 affiliated entity:
 - ICT partners (**SLG, SONE**)
 - Researchers, Academia (**NTUA**)
 - Energy agencies and other energy experts (**REGEA, BSERC, SEVEN**)
 - Regional organisations (**RPR**)
 - Facility and energy managers (**VEOLIA, BE**)
 - Service providers (**ISPE**)
 - Policy Makers & Public Authorities (**EHP**)

Belgium



Czechia



Austria



Spain



Latvia



Bulgaria



Croatia



Romania



Greece

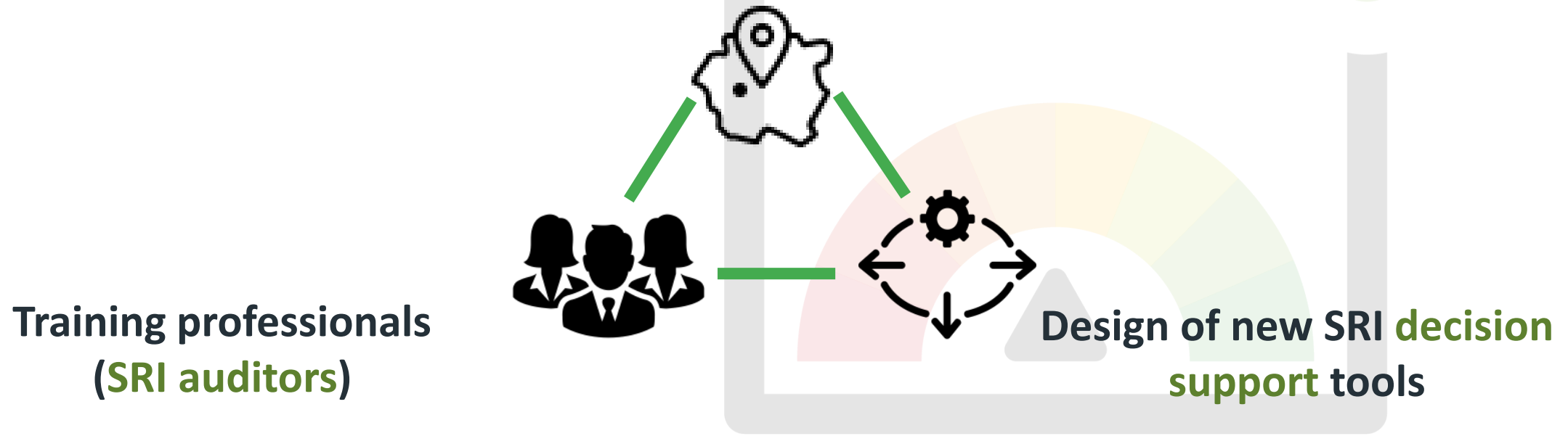
Project Objectives

- 1:** To engage **stakeholders in a co-creation process** for the design of the SRI-ENACT approach
- 2:** To develop a **web-based toolkit** (to calculate the SRI and support decision making)
- 3:** To **evaluate** the proposed SRI-ENACT solution in more than **1.200 buildings across EU** through an assessment program
- 4:** To **replicate** the SRI pilot programmes
- 5:** To develop concepts for **the financing of building smartness upgrades** and demonstrate the potential market value of smart readiness of buildings
- 6:** Develop **policy recommendations** for a global improvement of smart readiness of European buildings

Expected outcomes

Enhancing the smart readiness of buildings in **specific national contexts**

(on the basis of the national framework/ national regulations)



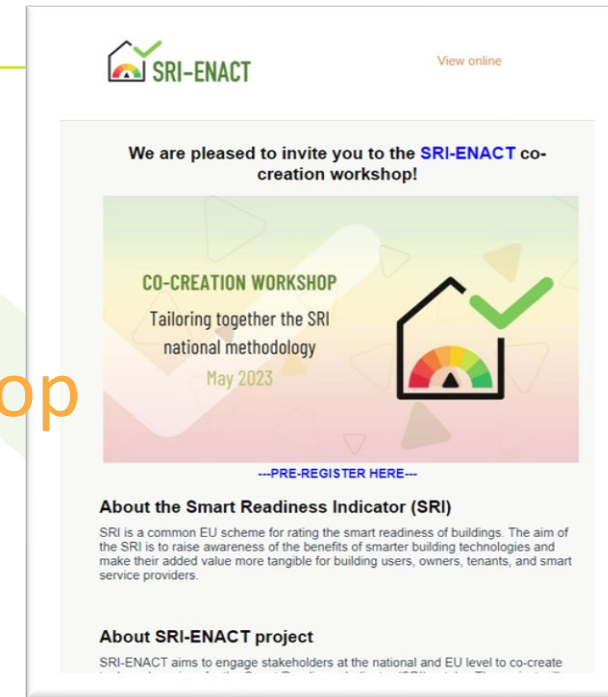
Next steps

1. Stakeholder Liaison groups

- 8 national + 1 EU level
- Following SRI updates
- Getting informed about new SRI advancements
- Co-designing a methodology

2. Co-creation workshop

- 8 parallel co-creation workshops with key stakeholders
- Presentation of analysis of the most recent updates on the national SRI landscape
- May 2023





SRI-ENACT

**Co-creating Tools and Services
for Smart Readiness Indicator Uptake**

Thank you

Laura Junasová



The LIFE21-CET-SMARTREADY-SRI-ENACT project has received funding from the European Union's LIFE Programme under grant agreement N°101077201

Smart Tools for Smart Buildings: Enhancing the intelligence of buildings in Europe – Smart²

SmartBuilt4EU – Final public conference, Smart Buildings in Europe
23 March 2023, COMET LOUISE, Brussels/online

Smart² in a nutshell

Andrei Vladimir Lițiu

Building Performance Adviser / Executive Director

REHVA / EPB Center (avl@rehva.eu / avl@epb.center)



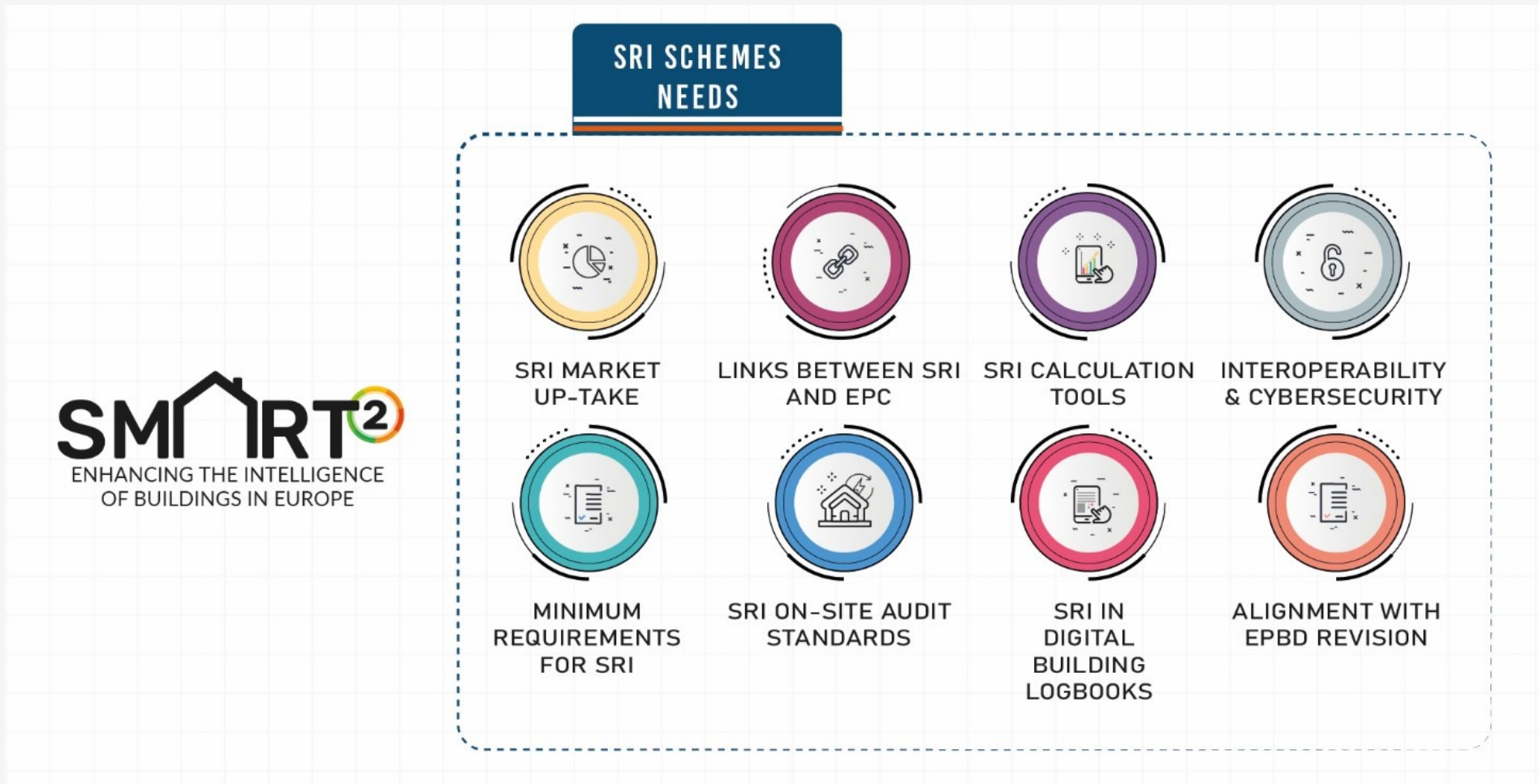
Funded by the European Union's LIFE programme, under the Grant Agreement N° 101077241. Views and opinions expressed are those of the author(s) only and do not necessarily reflect those of the European Union or European Climate, Infrastructure and Environment Executive Agency (CINEA). Neither the European Union nor the granting authority can be held responsible for them.



Smart² - Team & network



Smart² - Needs and challenges

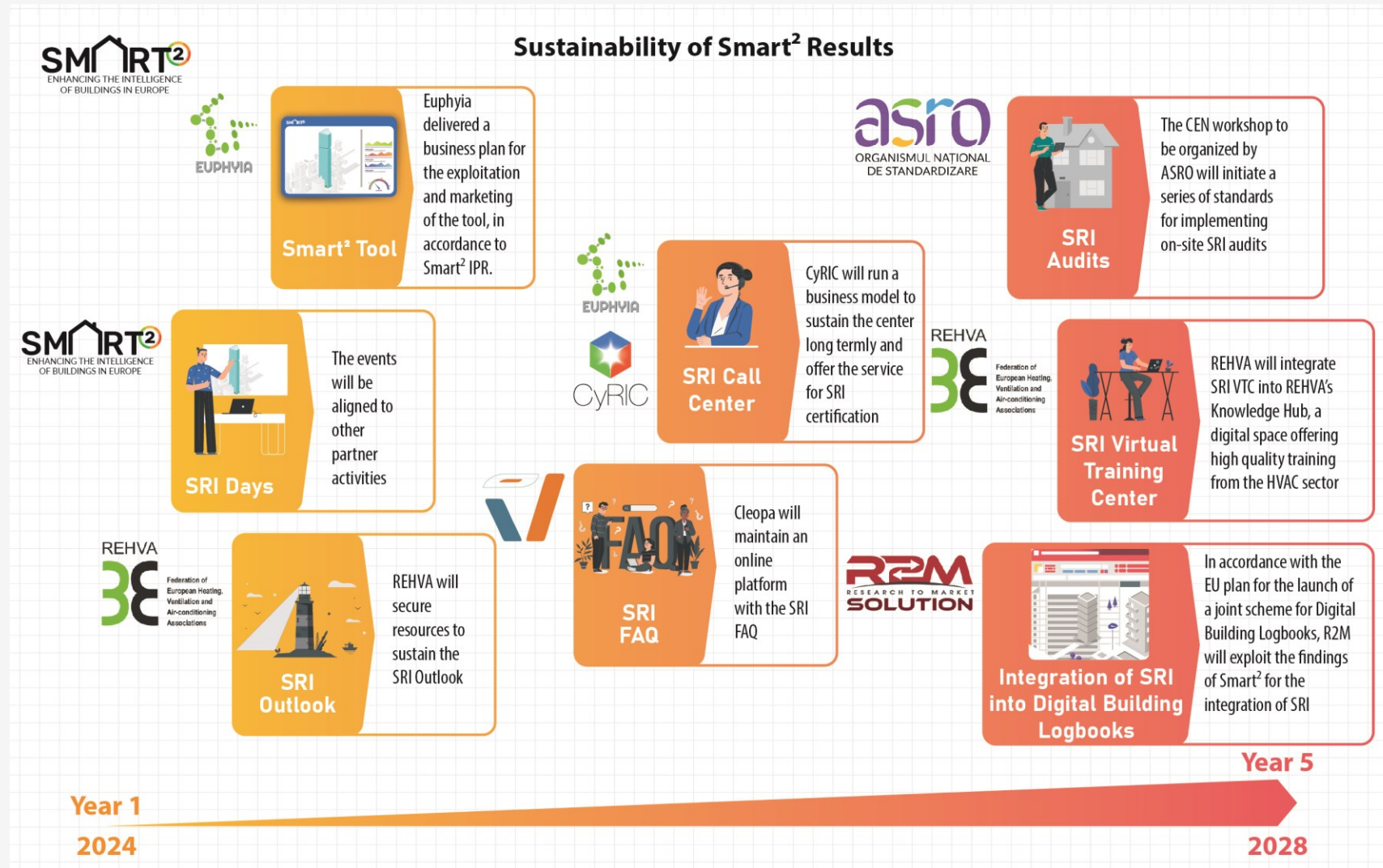


Smart² - Demonstration activities

SMART²
ENHANCING THE INTELLIGENCE
OF BUILDINGS IN EUROPE
IMPACT AMBITION



Smart² - Sustainability of Key Exploitable Results



Thank you for your attention and further engagement!

Go farther together, as opposed to fast alone!

Blгодарjá!

Hvala!

Děkuji!

Tak!

Dank je!

Thank you!

Aitäh!

Kiitos!

Merci!

Danke!

Efcharisto!

Köszönöm!

Go raibh
maith agat!

Grazie!

Paldies!

Ačiū!

Grazzi!

Dziękuję!

Obrigado!

Mulțumesc!

Đakujem!

Hvala!

Gracias!

Tack!



SRI-ENACT

Co-creating Tools and Services
for Smart Readiness Indicator Uptake

SMART²

ENHANCING THE INTELLIGENCE
OF BUILDINGS IN EUROPE

SRI²MARKET

easy
SRI

The logo for easy SRI features the word "easy" in a light grey, lowercase font above the word "SRI" in a large, bold, green font. To the right of the text is a graphic of a house with a rainbow-colored gauge on its roof, similar to the SRI-ENACT logo.

SB4EU Policy recommendations related to the SRI

Karine LAFFONT-ELOIRE, DOWEL Innovation

*This project has received funding from the European
Union's Horizon 2020 research and innovation
programme under grant agreement N° 956936.*



Policy recommendations – approach

Our policy recommendations are based upon the work done with the Smart Building Innovation Community from February 2021 to July 2022:

- 12 White Papers written by 4 Task Forces:

Task Force 1: Interactions with users

Task Force 2: Efficient building operation

Task Force 3: Interactions with the external environment

Task Force 4 : Crosscutting issues



Policy recommendations – overview of topics covered

- 
- 
- 1 smart buildings data governance
 - 2 open data culture/framework
 - 3 national or local regulations supporting the smartening of the building stock
 - 4 regulatory sandboxes
 - 5 labelling of devices and building certification
 - 6 dynamic building certificates (e.g. logbook)
 - 7 SRI implementation support
 - 8 interoperability of smart solutions and flexibility of smart buildings
 - 9 (green) public procurement
 - 10 upskilling

PR3: Encourage Member States to set up national or local regulations supporting the smartening of the building stock through stricter building codes, with clear long-term objectives and incentives

1

Action 3.1 Update and subsequently enforce compliance with building regulations to impose a minimum level of smartness (according to SRI) for new and renovated buildings

2

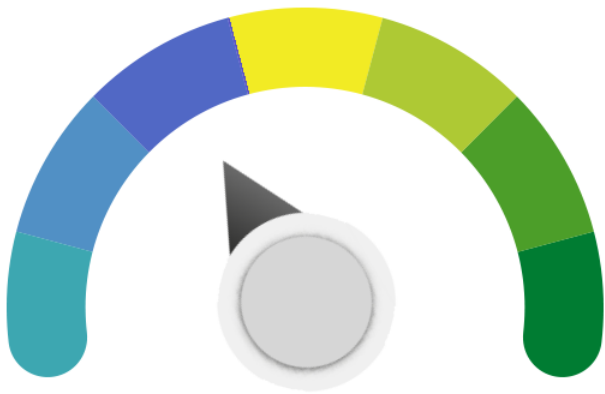
Action 3.2 Implement a set of positive encouragement measures to incentive the specification of smart building components and their integration from the planning and design phase

3

Action 3.3 Enforce adoption of SRI in building permitting processes



PR7: Support the **implementation of the SRI** in all Member States based on a harmonised, common EU calculation methodology.



1

Action 7.1 Provide technical and financial support for the testing of the SRI instrument

2

Action 7.2 Provide technical assistance to further detail the common EU SRI framework to unequivocally specify the SRI scheme for application to a variety of building types and locations throughout the EU

3

Action 7.3 Provide support for the definition, introduction, expansion and strengthening of minimum building smart readiness standards and the establishment of appropriate monitoring, evaluation and enforcement frameworks in the MS

Supporting the implementation of the Smart Readiness Indicator

Panel discussion

